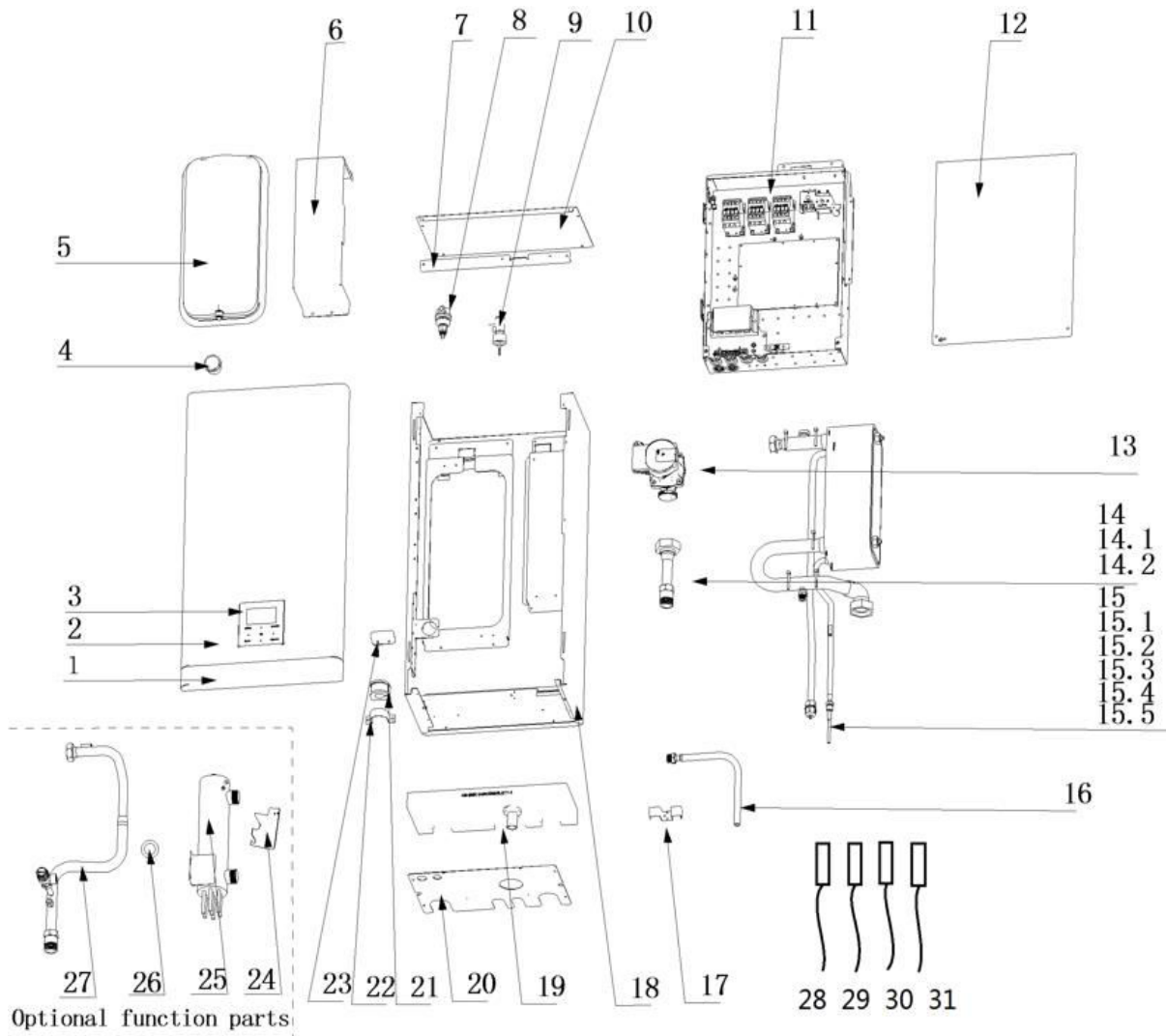
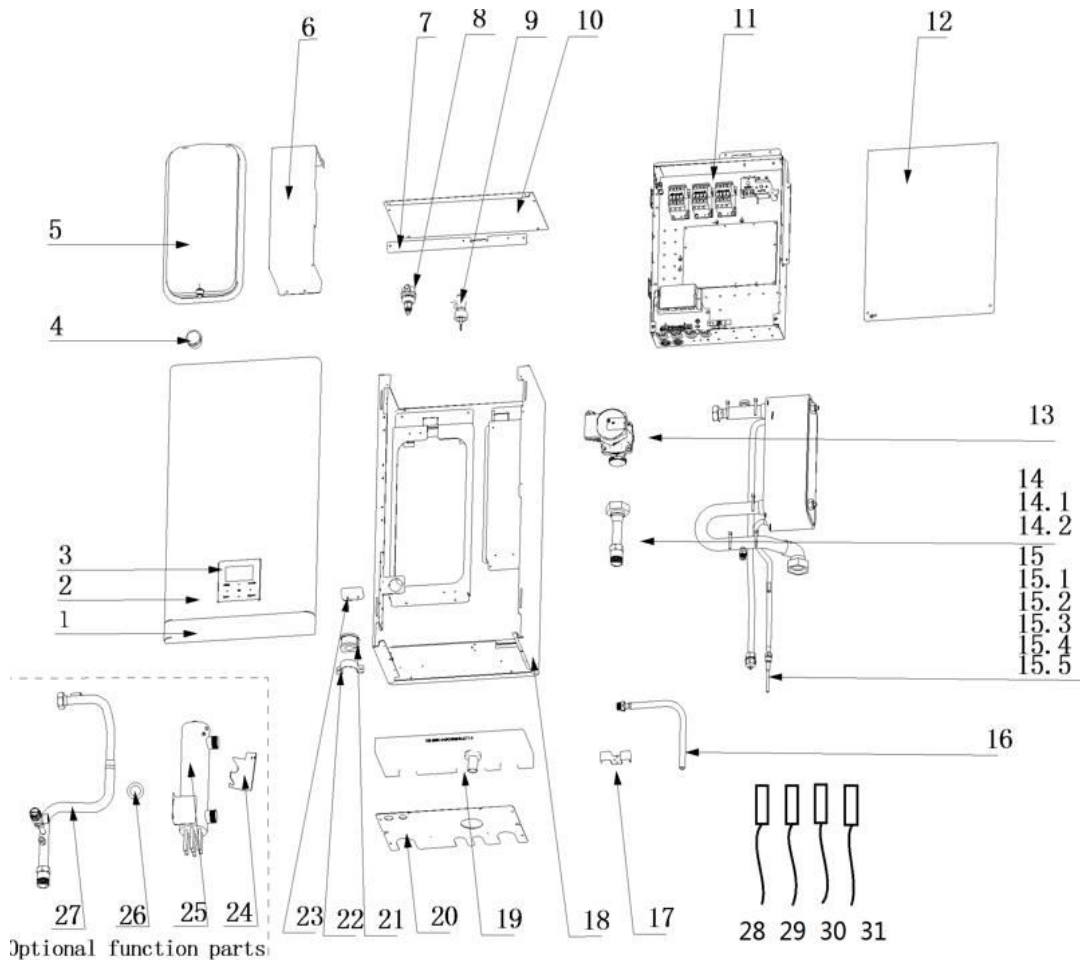


**MSH-60IB/3**



No	Description	Part Code	Note	Qty	Price Code
<b>MODEL: MSH-60IB/3</b>					
1	Decorative plate	912110600000129		1	AM
2	Panel	912210600001518		1	AZ
2	Wired controller	917317100A35072		1	
4	Pressure gauge	917500501000121		1	AS
5	closed expansion vessels with built in diaphragm	915500509000107		1	BF
6	Plate heat exchanger fixed plate	912210600001491		1	AK
7	E-Part box bracket	912210600001515		1	AD
8	Exhaust valve	915500211000047		1	BA
9	Water flow switch	917400510000474		1	BA
10	Top cover	912210600001506		1	AM
11	E-part box assembly	917210600A00190		1	CH
11.1	Hydraulic module, Main control board assembly	917110600000570		1	BS
12	Electric control box cover	912210600001629		1	AR
13	Shielded pump	917400802001733		1	CG
14	Water Inlet pipe assembly	915410600000433		1	AW
14.1	Pipe joint	915500303002324		1	AS
14.2	Hex nut	915500406000033		1	AQ
15	Plate heat exchanger assembly	915710600000263		1	CN
15.1	Plate heat exchanger assembly	915710600000264		1	CN
15.1.1	Plate heat exchanger	915700101000977		1	CC
15.1.2	Water outlet pipe assembly	915410600000491		1	AT
15.1.3	Water Inlet pipe assembly	915410600000431		1	BK
15.1.4	Liquid pipe assembly	915110600000659		1	AP
15.1.5	Gas pipe assembly	915110600000652		1	AU
16	Connecting hose	912100509000532		1	AU
17	Refrigerant pipe fixed plate	912210600001513		1	AC
18	Base assembly	912210600001493		1	BD
19	Drainage pan assembly	912210600001517		1	AV
20	Under plate	912210600001504		1	AK
21	Rubber gasket	912600401002915		2	AE
22	Pipe fixing clamp	912200202000266		2	AC
23	Expansion tank retaining clip	912210600001508		2	AB
24	Small water tank fixed plate	912210600001632		1	AC
25	Small water tank	912225300009063		1	BV
26	Seal ring (RoHS)	912600701000082		2	AC
27	Water Outlet pipe assembly	915410600000492		1	BE
28	Water Temperature Sensor	911201007000223		1	AY
29	Water Temperature Sensor	911201007001983		1	AH
30	Water Temperature Sensor	911201007001982		2	AM
31	Pipe Temperature Sensor	911201007000382		2	AF

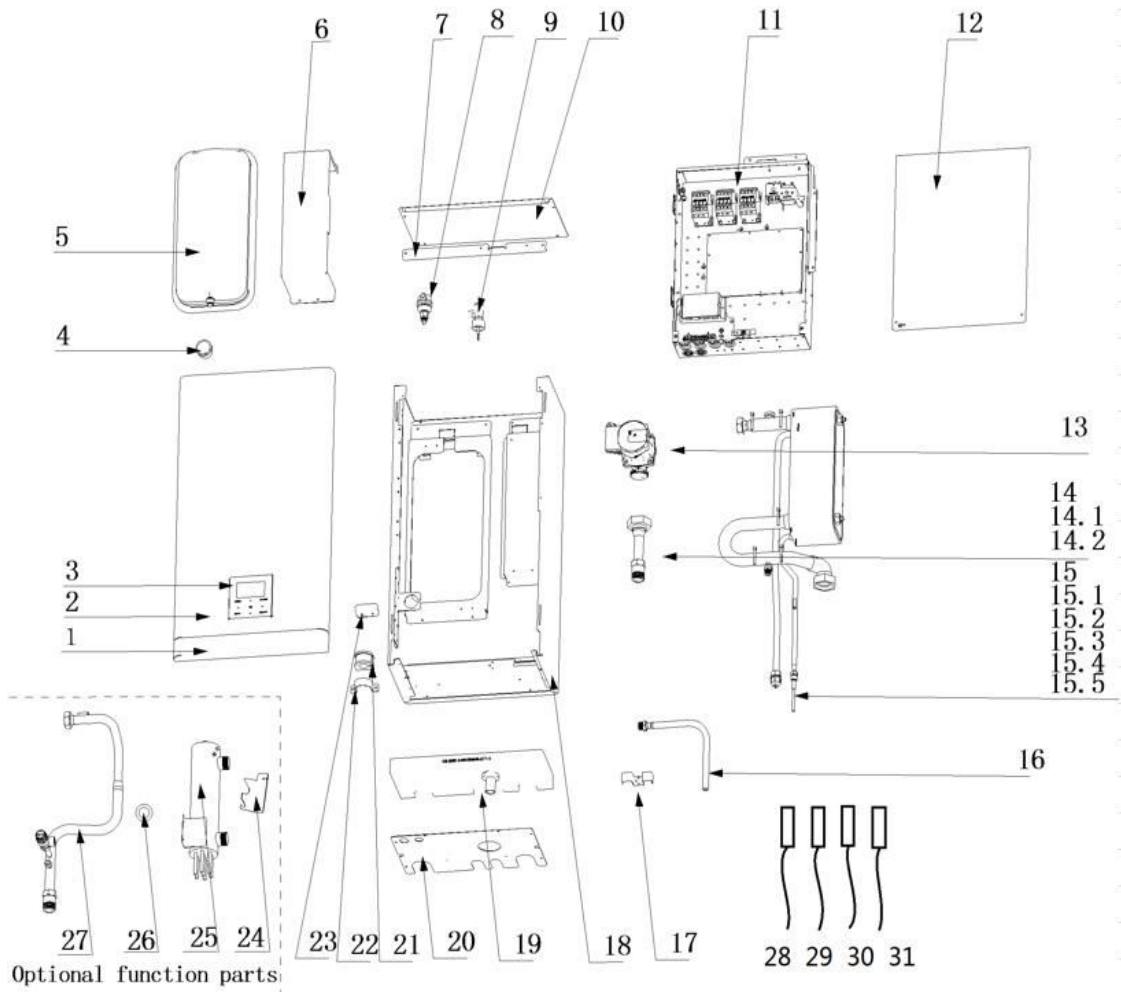
The data are subject to change without notice.



No	Description	Part Code	Note	Qty	Price Code
<b>MODEL: MSH-100IB-3/9</b>					
1	Decorative plate	912110600000129		1	AM
2	Panel	912210600001518		1	AZ
2	Wired controller	917317100006817		1	BQ
4	Pressure gauge	917500501000121		1	AS
5	closed expansion vessels with built in diaphragm	915500509000107		1	BF
6	Plate heat exchanger fixed plate	912210600001491		1	AK
7	E-Part box bracket	912210600001515		1	AD
8	Exhaust valve	915500211000047		1	BA
9	Water flow switch	917400510000474		1	BA
10	Top cover	912210600001506		1	AM
11	E-part box assembly	917210600A00270		1	CN
11.1	Hydraulic module, Main control board assembly	917110600000570		1	BS
12	Electric control box cover	912210600001629		1	AR
13	Shielded pump	917400802001733		1	CG
14	Water Inlet pipe assembly	915410600000433		1	AW
14.1	Pipe joint	915500303002324		1	AS
14.2	Hex nut	915500406000033		1	AQ
15	Plate heat exchanger assembly	915710600000265		1	CM
15.1	Plate heat exchanger assembly	915710600000266		1	CN
15.1.1	Plate heat exchanger	915700101000977		1	CC
15.1.2	Water outlet pipe assembly	915410600000491		1	AT
15.1.3	Water Inlet pipe assembly	915410600000431		1	BK
15.1.4	Liquid pipe assembly	915110600000656		1	AP
15.1.5	Gas pipe assembly	915110600000652		1	AU
16	Connecting hose	912100509000532		1	AU
17	Refrigerant pipe fixed plate	912210600001513		1	AC
18	Base assembly	912210600001493		1	BD
19	Drainage pan assembly	912210600001517		1	AV
20	Under plate	912210600001504		1	AK
21	Rubber gasket	912600401002915		2	AE
22	Pipe fixing clamp	912200202000266		2	AC
23	Expansion tank retaining clip	912210600001508		2	AB
24	Small water tank fixed plate	912210600001632		1	AC
25	Small water tank	912225300009065		1	BW
26	Seal ring (RoHS)	912600701000082		2	AC
27	Water Outlet pipe assembly	915410600000492		1	BE
28	Water Temperature Sensor	911201007000223		1	AY
29	Water Temperature Sensor	911201007001983		1	AH
30	Water Temperature Sensor	911201007001982		2	AM
31	Pipe Temperature Sensor	911201007000382		2	AF

The data are subject to change without notice.

MSH-160IB-3/9





No	Description	Part Code	Note	Qty	Price Code
<b>MODEL: MSH-160IB-3/9</b>					
1	Decorative plate	912110600000129		1	AM
2	Panel	912210600001518		1	AZ
2	Wired controller	917317100A35072		1	
4	Pressure gauge	917500501000121		1	AS
5	closed expansion vessels with built in diaphragm	915500509000107		1	BF
6	Plate heat exchanger fixed plate	912210600001489		1	AK
7	E-Part box bracket	912210600001515		1	AD
8	Exhaust valve	915500211000047		1	BA
9	Water flow switch	917400510000007		1	BA
10	Top cover	912210600001506		1	AM
11	E-part box assembly	917210600A00270		1	CN
11.1	Hydraulic module, Main control board assembly	917110600000570		1	BS
12	Electric control box cover	912210600001629		1	AR
13	Shielded pump	917400802001733		1	CG
14	Water Inlet pipe assembly	915410600000433		1	AW
14.1	Pipe joint	915500303002324		1	AS
14.2	Hex nut	915500406000033		1	AQ
15	Plate heat exchanger assembly	915710600000261		1	CN
15.1	Plate heat exchanger assembly	915710600000262		1	CQ
15.1.1	Plate heat exchanger	915700101000976		1	CE
15.1.2	Water outlet pipe assembly	915410600000491		1	AT
15.1.3	Water Inlet pipe assembly	915410600000431		1	BK
15.1.4	Liquid pipe assembly	915110600000656		1	AP
15.1.5	Gas pipe assembly	915110600000652		1	AU
16	Connecting hose	912100509000532		1	AU
17	Refrigerant pipe fixed plate	912210600001513		1	AC
18	Base assembly	912210600001493		1	BD
19	Drainage pan assembly	912210600001517		1	AV
20	Under plate	912210600001504		1	AK
21	Rubber gasket	912600401002915		2	AE
22	Pipe fixing clamp	912200202000266		2	AC
23	Expansion tank retaining clip	912210600001508		2	AB
24	Small water tank fixed plate	912210600001632		1	AC
25	Small water tank	912225300009065		1	BW
26	Seal ring (RoHS)	912600701000082		2	AC
27	Water Outlet pipe assembly	915410600000492		1	BE
28	Water Temperature Sensor	911201007000223		1	AY
29	Water Temperature Sensor	911201007001983		1	AH
30	Water Temperature Sensor	911201007001982		2	AM
31	Pipe Temperature Sensor	911201007000382		2	AF
<b>The data are subject to change without notice.</b>					